

534

Sfera rame tonda con nervature.
Round copper ball with ribs.



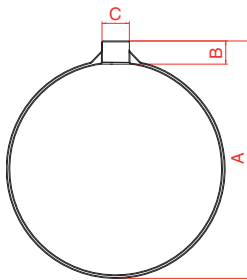
Articoli disponibili	Available items
534/1 Ø 85 - 90 - 100 Sfera rame, filetto 1/4 W.	534/1 Ø 85 - 90 - 100 Copper ball, 1/4 W thread.
534/2 Ø 85 - 90 - 100 Sfera rame dissaldata, filetto 1/4 W, tipo export.	534/2 Ø 85 - 90 - 100 Unsoldered copper ball, 1/4 W thread, export type.
534/3 Ø 120 - 150 Sfera rame, filetto 5/16 W.	534/3 Ø 120 - 150 Copper ball, 5/16 W thread.
534/4 Ø 120 - 150 Sfera rame dissaldata, filetto 5/16 W, tipo export.	534/4 Ø 120 - 150 Unsoldered copper ball, 5/16 W thread, export type.

Informazioni tecniche

- Temperatura massima dell'acqua consigliata **60°C**.
- Materiali: **CW024A UNI EN 1652 - CW614N UNI EN 12164 - Lega di stagno.**

Technical informations

- Maximum recommended working temperature **60°C**.
- Materials: **CW024A UNI EN 1652 - CW614N UNI EN 12164 - tin alloy.**



Art.	Ø	mm			Filetto Thread	
		A	B	C		
534/1	85	96	10	9	1/4 W	X Pezzi sfusi / Loose pieces
534/1	90	100	10	9	1/4 W	X Pezzi sfusi / Loose pieces
534/1	100	110	10	9	1/4 W	X Pezzi sfusi / Loose pieces
534/3	120	130	10	12	5/16 W	X Pezzi sfusi / Loose pieces
534/3	150	160	10	12	5/16 W	X Pezzi sfusi / Loose pieces

535

Sfera rame tonda con reggisfera saldato.
Round copper ball with soldered sliding.



535/2

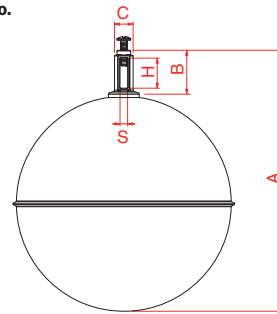
Articoli disponibili	Available items
535/1 Ø 120 - 150 - 180 - 200 - 220 - 250 - 300 Sfera rame tonda con reggisfera saldato.	535/1 Ø 120 - 150 - 180 - 200 - 220 - 250 - 300 Round copper ball with soldered sliding.
535/2 Ø 120 - 150 - 180 - 200 - 220 - 250 - 300 Sfera rame tonda, dissaldata, tipo export.	535/2 Ø 120 - 150 - 180 - 200 - 220 - 250 - 300 Round copper ball, unsoldered, export type.

Informazioni tecniche

- Temperatura massima dell'acqua consigliata **60°C**.
- Materiali: **CW024A UNI EN 1652 - CW752N UNI EN 1982 - CW508L UNI EN 12166 - Lega di stagno.**

Technical informations

- Maximum recommended working temperature **60°C**.
- Materials: **CW024A UNI EN 1652 - CW752N UNI EN 1982 - CW508L UNI EN 12166 - tin alloy.**



Art.	Ø	mm					
		A	B	C	H	S	
535/1	120	155	30	13	20	5	X Pezzi sfusi / Loose pieces
535/1	150	185	30	13	20	5	X Pezzi sfusi / Loose pieces
535/1	180	215	30	13	20	5	X Pezzi sfusi / Loose pieces
535/1	200	235	30	13	20	5	X Pezzi sfusi / Loose pieces
535/1	220	255	30	13	20	5	X Pezzi sfusi / Loose pieces
535/1	250	285	30	13	20	5	X Pezzi sfusi / Loose pieces
535/1	300	335	30	13	20	5	X Pezzi sfusi / Loose pieces

