



Raccordo a compressione per tubo rame, monocono in gomma.

*Compression fitting for copper pipe with rubber monocone.*

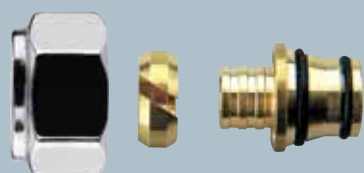
720LS	f	⊗	⊗
72010LS	Ø10	30	150
72012LS	Ø12	30	150
72014LS	Ø14	30	150



Raccordo a compressione per tubo rame, monocono in gomma.

*Compression fitting for copper pipe with rubber monocone.*

721LS	f	⊗	⊗
72115LS	Ø15	30	150
72116LS	Ø16	30	150



Raccordo per tubo plastica.

*Fitting for plastic pipe.*

751LS	f	⊗	⊗
75112LS	12 x 2	30	150
75115LS	15 x 2,5	30	150
75116LS	16 x 2	30	150
75117LS	17 x 2	30	150
75118LS	18 x 2,5	30	150
75120LS	20 x 2	30	150



Raccordo per tubo multistrato.

*Fitting for multilayer pex-al pex pipe.*

753LS	f	⊗	⊗
75314LS	14 x 2	30	150
75316LS	16 x 2	30	150
753162LS	16 x 2,25	30	150
753166LS	16,2 x 2,6	30	150
75317LS	17 x 2	30	150
753177LS	17 x 2,7	30	150
75318LS	18 x 2	30	150
75320LS	20 x 2	30	150
753202LS	20 x 2,25	30	150
75325LS	20 x 2,5	30	150
75329LS	20 x 2,9	30	150



Raccordo a compressione per tubo rame, monocono in gomma, senza calotta.

*Compression fitting for copper pipe with rubber monocone, without nut.*

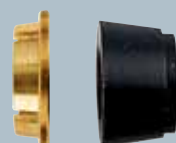
720V	f	⊗	⊗
72010V	Ø10	30	150
72012V	Ø12	30	150
72014V	Ø14	30	150



Raccordo per tubo multistrato, senza calotta.

*Fitting for multilayer pex-al pex pipe, without nut.*

752	f	⊗	⊗
75214	14 x 2	30	150
75216	16 x 2	30	150
752162	16 x 2,25	30	150
752166	16,2 x 2,6	30	150



Raccordo a compressione per tubo rame, monocono in gomma, senza calotta.

*Compression fitting for copper pipe with rubber monocone, without nut.*

721V	f	⊗	⊗
72115V	Ø15	30	150
72116V	Ø16	30	150